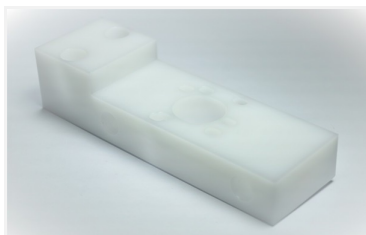


## Datasheet AE900



AE900 has high mechanical strength, heat resistance and good antifriction properties. It's characterized by a low coefficient of friction and good wear properties, unaffected by wet environments. AE900 offers also a good resistance to a wide range of chemicals and many solvents. It is porosity freed and most formulations are approved for contact with food.

## Application

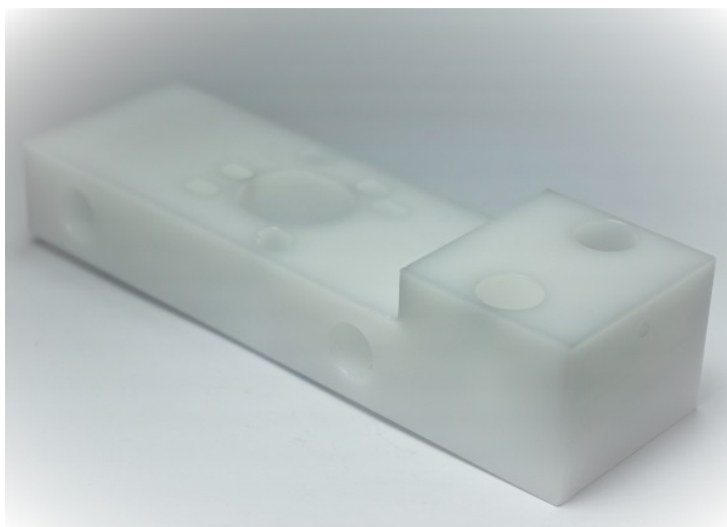
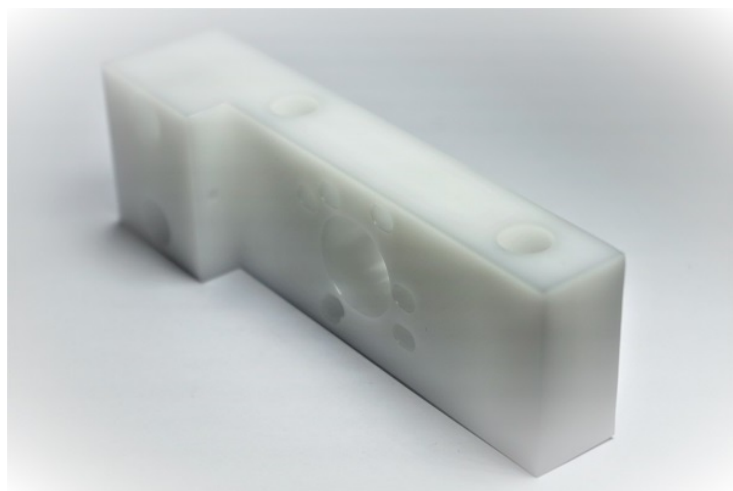
Food processing, agriculture, medical, electric, electronic, automotive, general machine building, transport and logistics, bottle and car washing equipment, sports equipment, office machinery, textile.

## Material

POM-C.

## Availability

	Value	Unit
Rod diameters	6-500	mm
Tube inside diameter	10-375	mm
Tube outside diameter	25-500	mm
Length standard	1000/3000	mm
Sheet thickness	1-150	mm
Sheet size	610/1000/1220x2000/3000	mm



## AE900 - Specifications

### Physical properties

	Test standard	Value	Unit
Density		1,41	g/cm <sup>3</sup>
Thermal conductivity	Method A	0,33	W/m°K
Specific heat capacity	IEC 1006	1,5	J/g.K
Moisture absorption at 23°C, 50% RH	ISO 62	0,2	%
Water absorption at 23 °C	ISO 62	0,8	%
Flammability	UL 94	HB	[-]

### Mechanical properties

	Test standard	Value	Unit
Tensile strength	ISO 527	65	MPa
Hardness	ISO 868	81	SHORE-D
Yield stress	ISO 527	65	MPa
Elongation at break	ISO 527	40	%
Modulus of elasticity in tension	ISO 527	2900	MPa
Bending modulus	Flexural test	2800	MPa
Flexural strength	ISO 178	95	MPa
Charpy impact strength +23°C	ISO 179/1eU	no break	kJ/m <sup>2</sup>
Charpy notched impact strength +23°C	ISO/1eA	7	kJ/m <sup>2</sup>
Ball indentation hardness	ISO 2039-1	125	N/mm <sup>2</sup>
Compressive modulus	ISO 604	2400	MPa

### Thermal properties

	Test standard	Value	Unit
Min. working temperature		-50	°C
Max. working temperature		100	°C
Intermittent working temperature		140	°C
Heat distortion temperature	Method A ISO 75	110	°C
Melting temperature	ISO 3146	164	°C
Glass transition temperature	ISO 3146	-60	°C
Thermal coefficient of linear expansion	DIN 53752	11	1/K.10-5

### Friction properties

	Test standard	Value	Unit
--	---------------	-------	------

### Electrical properties

	Test standard	Value	Unit
Dielectric constant		on request	
Dielectric loss factor		on request	
Dielectric strength	IEC 243	>20	KV/mm

Electrical properties

Dielectric constant at 1MHZ	IEC 250	3,8	[-]
Volume resistivity	IEC 93	10 <sup>14</sup>	Ω.cm
Surface resistivity	IEC 93	10 <sup>13</sup>	Ω
Resistance to tracking (CTI)	DIN EN 60112	600	[-]